



India Meteorological Department
(Ministry of Earth Sciences)

NATIONAL BULLETIN NO. 26 (BOB/01/2024)

TIME OF ISSUE: 2300 HOURS IST DATED: 27.05.2024
FROM: INDIA METEOROLOGICAL DEPARTMENT (FAX NO. 24643965/24699216/24623220)

TO: CONTROL ROOM, NDM, MINISTRY OF HOME AFFAIRS (FAX.NO. 23093750)
CONTROL ROOM NDMA (FAX.NO. 26701729)
CABINET SECRETARIAT (FAX.NO.23012284, 23018638)
PS TO HON'BLE MINISTER FOR S & T AND EARTH SCIENCES (FAX NO.23316745)
SECRETARY, MOES (FAX NO. 24629777)
H.Q. (INTEGRATED DEFENCE STAFF AND CDS) (FAX NO. 23005137/23005147)
DIRECTOR GENERAL, DOORDARSHAN (23385843)
DIRECTOR GENERAL, AIR (23421105, 23421219)
PIB MOES (FAX NO. 23389042)
UNI (FAX NO. 23355841)
D.G. NATIONAL DISASTER RESPONSE FORCE (NDRF) (FAX NO. 26105912, 2436 3260)
DIRECTOR, PUNCTUALITY, INDIAN RAILWAYS (FAX NO. 23388503)
CHIEF SECRETARY, ANDAMAN & NICOBAR ISLANDS (FAX NO. 03192- 232656)
CHIEF SECRETARY, GOVT. WEST BENGAL (FAX NO. 033-22144328)
CHIEF SECRETARY, GOVT. OF ODISHA (FAX NO. 0674 -2536660)
CHIEF SECRETARY, GOVT. OF ANDHRA PRADESH (FAX NO. 0863-2441029, 08645-246600)
CHIEF SECRETARY, GOVT. OF TAMIL NADU (FAX NO. 044-25672304)
CHIEF SECRETARY, GOVT. OF PUDUCHERRY (FAX NO. 0413-2337575, 2334145)
CHIEF SECRETARY, GOVT. OF TRIPURA (FAX NO. 0381-2414013, 2413200)
CHIEF SECRETARY, GOVT. OF MIZORAM (FAX NO. 0389-2322745, 2320588)
CHIEF SECRETARY, GOVT. OF MANIPUR (FAX NO. 0385-2452629)
CHIEF SECRETARY, GOVT. OF NAGALAND (FAX NO. 0370-2270057)
CHIEF SECRETARY, GOVT. OF ASSAM (FAX NO. 0361-2260900)
CHIEF SECRETARY, GOVT. OF MEGHALAYA (FAX NO. 0364-2225978)

Sub: Cyclonic Storm “Remal” (pronounced as “Re-Mal”) weakened into a Deep Depression over Bangladesh

The Cyclonic Storm “Remal” (pronounced as “Re-Mal”) over Bangladesh moved east-northeastwards with a speed of 20 kmph during past 06 hours, **weakened into a Deep Depression** and lay centered at 2030 hrs IST of today, the 27th May, 2024 over Bangladesh, near **latitude** 23.7 °N and **longitude** 90.2 °E about 150 km north-northeast of Mongla (Bangladesh), 170 km west-southwest of Srimangal (Bangladesh) and 20 km west-southwest of Dhaka (Bangladesh)

The system is likely to move nearly northeastwards, and gradually weaken further into a Depression during next 12 hours.

Forecast track and intensity are given in the following table:

Date/Time (IST)	Position (Lat. °N/ long. °E)	Maximum sustained surface wind speed (Kmph)	Category of cyclonic disturbance
27.05.24/2030	23.7/90.2	55-65 gusting to 75	Deep Depression
27.05.24/2330	23.9/90.6	50-60 gusting to 70	Deep Depression
28.05.24/0530	24.3/91.2	40-50 gusting to 60	Depression
28.05.24/1130	24.7/91.9	25-35 gusting to 45	Well Marked Low Pressure Area

Warnings (Graphics Attached):

Heavy Rainfall Warning:

- (a) **West Bengal:** Light to moderate rainfall at most places with **heavy rainfall** at isolated places is likely over coastal and eastern districts of Gangetic West Bengal adjacent to Bangladesh on 27th May.
Light to moderate rainfall at most places with **heavy to very heavy rainfall** at isolated places likely over eastern districts of Sub-Himalayan West Bengal on 27th and 28th May.

- (b) **Northeastern States:** Light to moderate rainfall at most places with **heavy to very heavy rainfall** at a few places is likely over Assam, Meghalaya, Arunachal Pradesh, Nagaland, Mizoram, Manipur & Tripura on 27th & 28th May. Isolated **extremely heavy rainfall** (≥ 20 cm) is also likely over Assam, Meghalaya, Mizoram & Tripura on 27th, and Arunachal Pradesh on 28th May.

Wind Warning:

(a) Bay of Bengal

- ❖ **Squally wind speed reaching 55-65 kmph gusting to 75 kmph** is prevailing over North Bay of Bengal. It is likely to decrease becoming squally wind speed reaching 40-50 kmph gusting to 60 kmph by morning of 28th May.

(b) Along & off Bangladesh and West Bengal coasts

- ❖ **Squally wind speed reaching 45-55 kmph gusting to 65 kmph** is prevailing and decrease gradually thereafter.

(c) Northeastern States

Squally wind speed reaching 50-60 kmph gusting to 70 kmph is likely over South Assam and Meghalaya, Tripura and **40-50 kmph gusting to 60 kmph** is likely over & Mizoram, Manipur and remaining parts of Assam during next 06 hours. It would gradually reduce to 40-50 gusting to 60 kmph over Assam & Meghalaya till noon of 28th May.

Sea condition warning:

(a) North Bay of Bengal

Very rough Sea condition is likely over North Bay of Bengal and gradually improve becoming rough from morning of 28th May and improve thereafter.

(b) Along & off Bangladesh and West Bengal coasts

Very rough Sea condition is likely over North Bay of Bengal and gradually improve becoming rough from morning of 28th May and improve thereafter.

Damage Expected over Northeastern States (Assam, Meghalaya, Manipur, Tripura, Mizoram)

- Damage to vulnerable structures and thatched houses/ huts.
- Unattached metal sheets may fly.
- Breaking of tree branches, uprooting of small trees. Damage to banana and papaya trees.
- Partial damage to power and communication lines due to breaking of branches and uprooting of small trees.
- Damage to Kutcha and minor damage to Pucca roads due to heavy rain.
- Damage to paddy crops, horticultural crops and orchards.
- Inundation of low-lying areas and localized flooding
- Occasional reduction in visibility due to heavy rainfall.
- Disruption of traffic due to water logging and squally winds

Action Suggested for Damage Expected over Northeastern States (Assam, Meghalaya, Manipur, Tripura, Mizoram) on 27th May:

- People in vulnerable areas to move to safer places.
- People in affected areas to remain indoors.
- Total suspension of fishing operations on 27th May.
- Surface transport and shipping Onshore & Offshore operations over North Bay of Bengal need to be regulated till afternoon of 27th May
- Avoid going to areas that face the water logging problems often.

Fishermen Warning (graphics attached):

Fishermen are advised not to venture into North Bay of Bengal along and off West Bengal and Bangladesh coasts during next 12 hours.

The system is under continuous surveillance and the next message will be issued at 0230 hours IST of 28th May, 2024.

(Shobhit Katiyar)

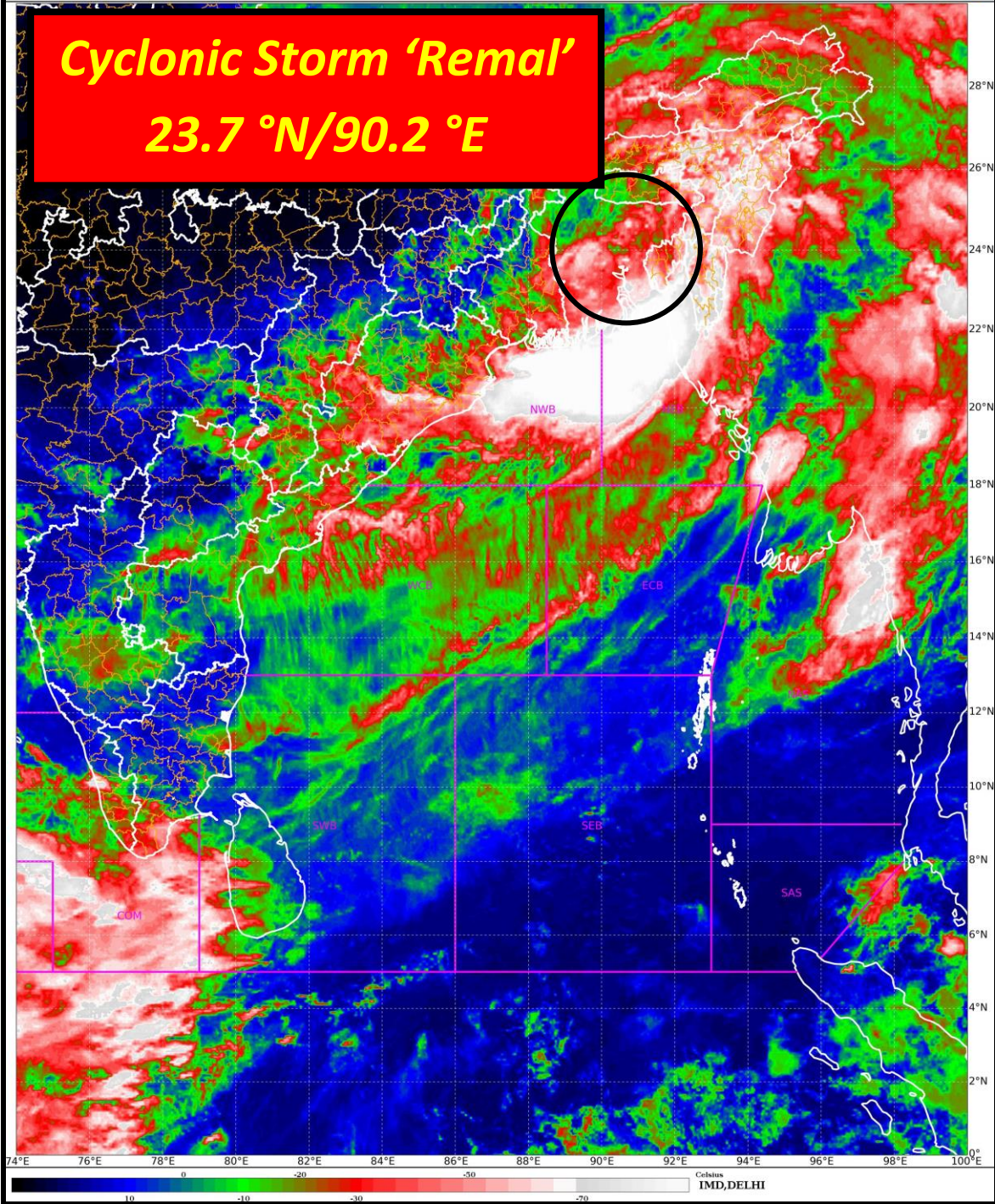
Scientist D, Cyclone Warning Division, New Delhi

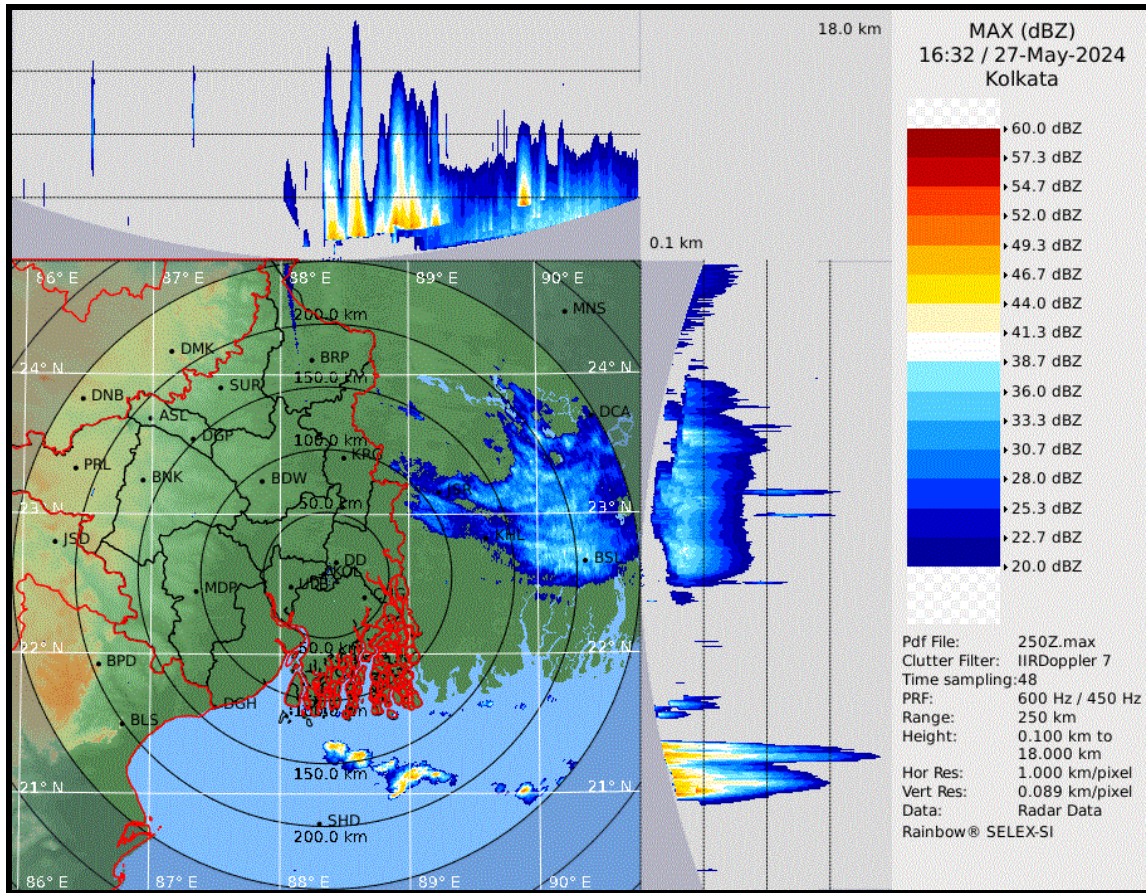
*Copy to: ACWC Kolkata/ ACWC Chennai/ CWC Bhubaneswar/CWC Visakhapatnam/MO
Port Blair/RMC Guwahati*



Cyclonic Storm 'Remal'

23.7 °N/90.2 °E





Kolkata Radar Image 22:00 IST of today, the 27th May



FORECAST TRACK ALONGWITH CONE OF UNCERTAINTY IN ASSOCIATION WITH DEEP DEPRESSION (REMANANT OF CYCLONIC STORM 'REMAL') OVER BANGLADESH BASED ON 1500 UTC (2030 IST) OF 27TH MAY 2024.



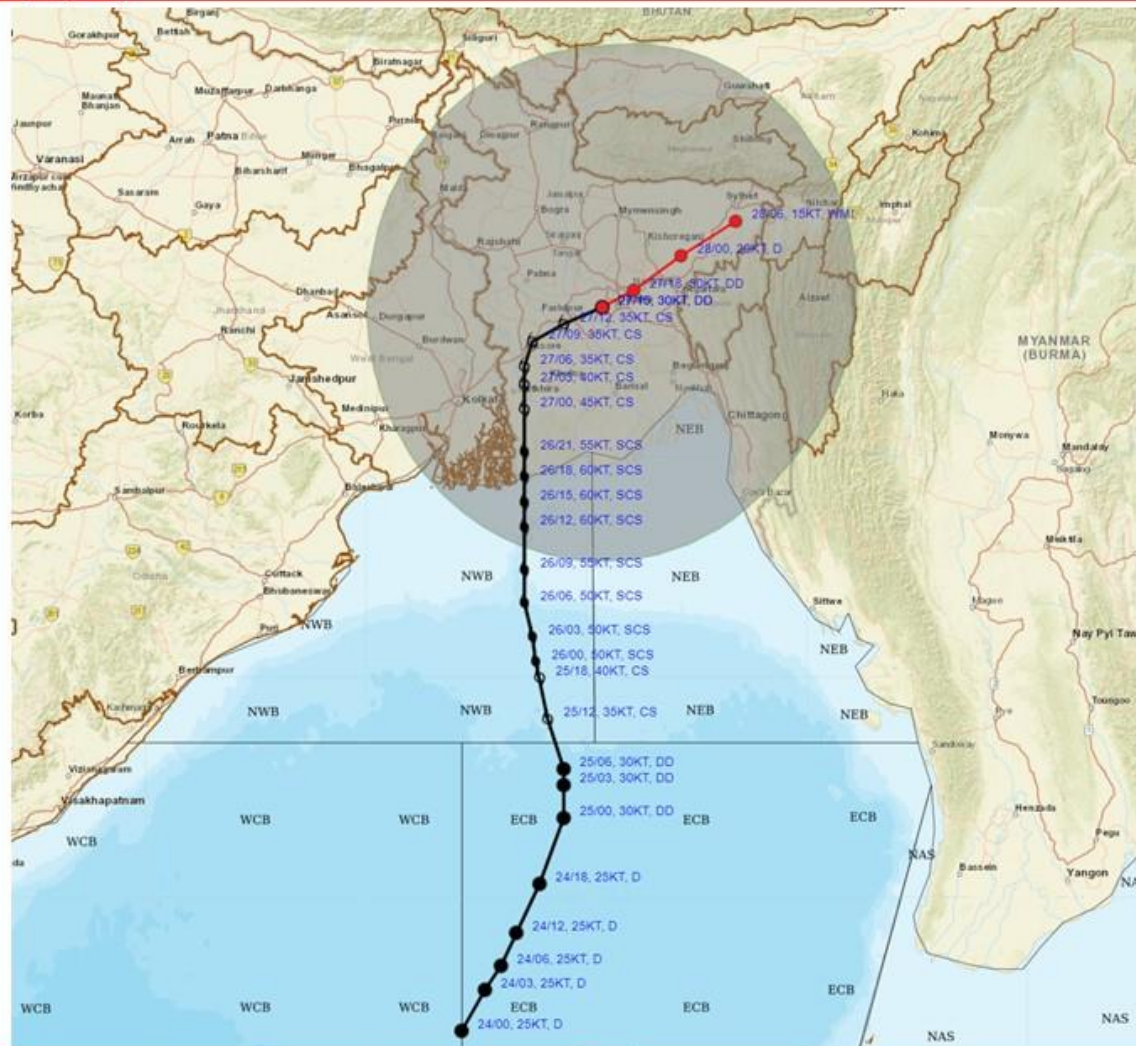
DATE/TIME IN UTC
 IST=UTC + 0530
 L: LOW PRESSURE AREA
 WML: WELL MARKED LOW PRESSURE AREA
 D: DEPRESSION (17-27 KT)
 DD: DEEP DEPRESSION (28-33 KT)
 CS: CYCLONIC STORM (34-47 KT)
 SCS: SEVERE CYCLONIC STORM (48-63KT)
 VSCTS: VERY SEVERE CYCLONIC STORM (64-89 KT)
 ESCS: EXTREMELY SEVERE CYCLONIC STORM (90-119 KT)
 SuCS: SUPER CYCLONIC STORM (≥ 120 KT)

- LESS THAN 34 KT
- 34.47 KT
- ≥ 48 KT
- OBSERVED TRACK
- FORECAST TRACK
- ▲ CONE OF UNCERTAINTY

Forecast Date and Time (UTC)	DISTANCE (KM) AND DIRECTION FROM STATIONS		
	SRIMANGAL	Dhaka	Mongla
27.05.24/1500	170, WSW	20, WSW	150, NNE
27.05.24/1800	130, WSW	40, ENE	190, NE
28.05.24/0000	60, W	110, ENE	260, NE
28.05.24/0600	50, NNE	200, ENE	340, NE



FORECAST TRACK ALONGWITH QUADRANT WIND DISTRIBUTION IN ASSOCIATION WITH DEEP DEPRESSION (REMANANT OF CYCLONIC STORM 'REMAL') OVER BANGLADESH BASED ON 1500 UTC (2030 IST) OF 27TH MAY 2024.



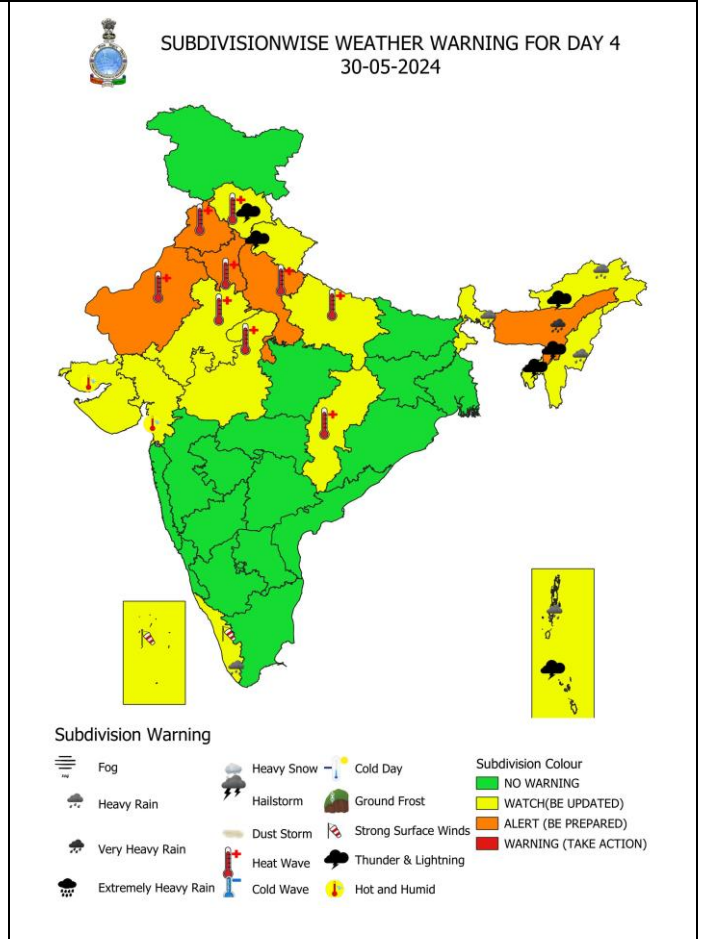
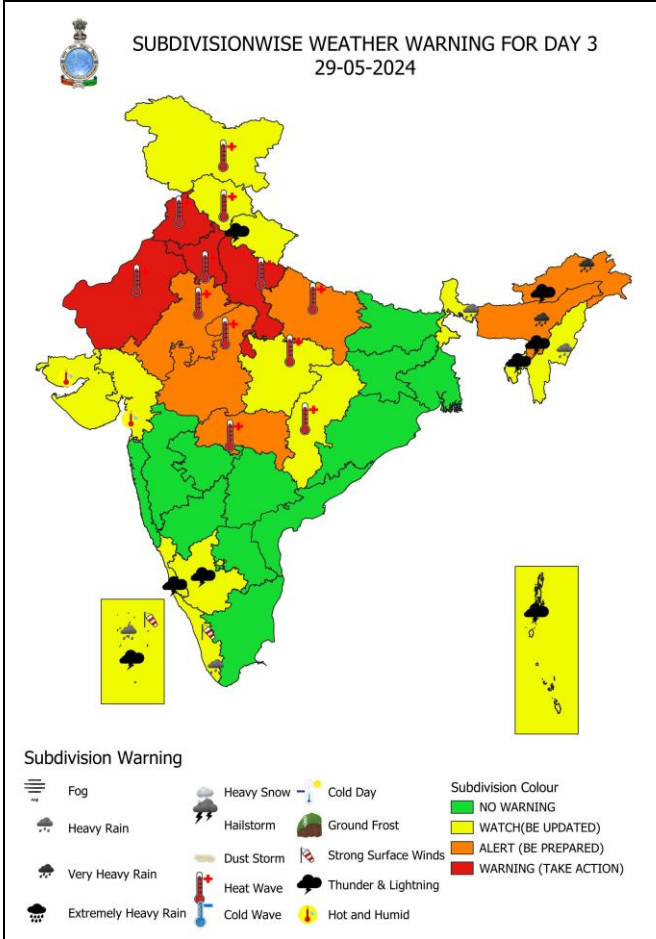
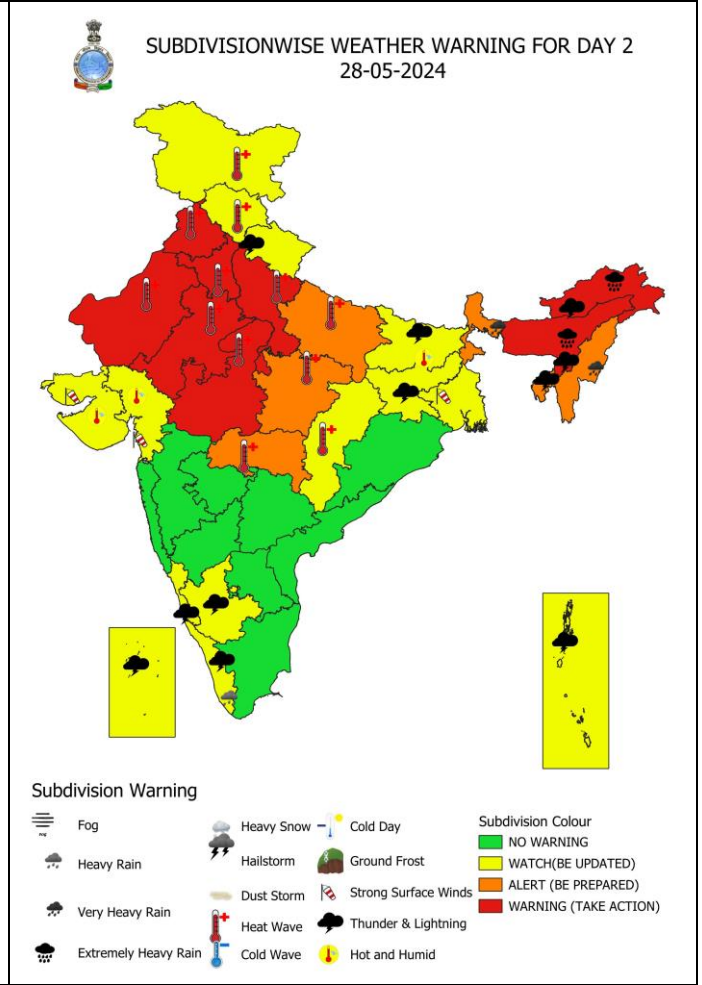
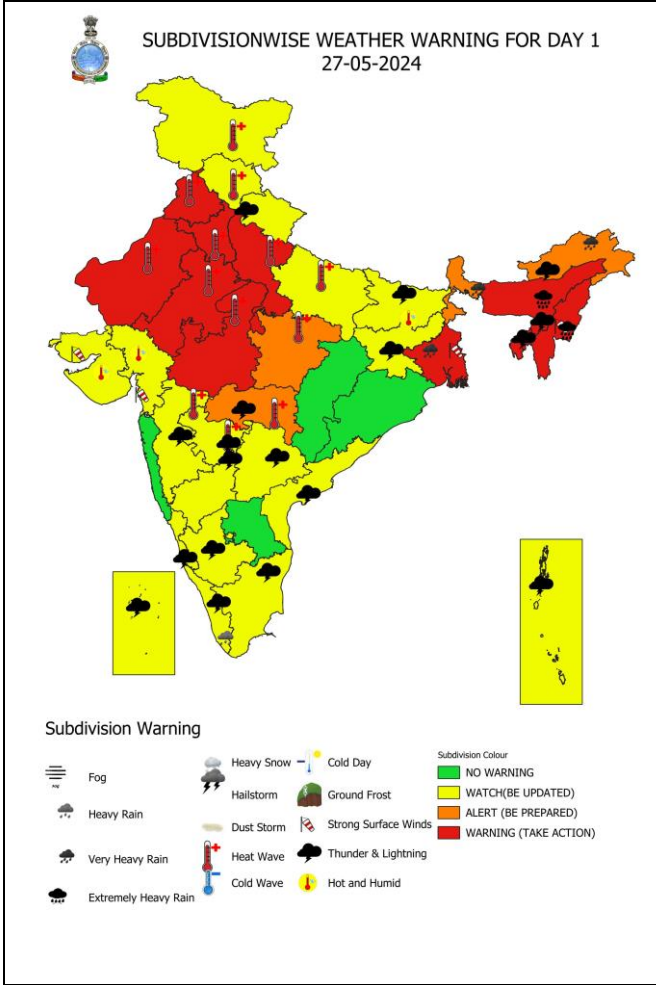
DATE/TIME IN UTC
 IST=UTC + 0530
 L: LOW PRESSURE AREA
 WML: WELL MARKED LOW PRESSURE AREA
 D: DEPRESSION (17-27 KT)
 DD: DEEP DEPRESSION (28-33 KT)
 CS: CYCLONIC STORM (34-47 KT)
 SCS: SEVERE CYCLONIC STORM (48-63KT)
 VSCS: VERY SEVERE CYCLONIC STORM (64-89 KT)
 ESCS: EXTREMELY SEVERE CYCLONIC STORM (90-119 KT)
 SuCS: SUPER CYCLONIC STORM (≥ 120 KT)

● LESS THAN 34 KT
 ○ 34-47 KT
 ● ≥ 48 KT
 — OBSERVED TRACK
 — FORECAST TRACK
 ■ CONE OF UNCERTAINTY
 AREA OF MAXIMUM SUSTAINED WIND SPEED:
 ■ 28-33 KT (52-61 KMPH)
 ■ 34-49 KT (62-91 KMPH)
 ■ 50-63 KT (92-117 KMPH)
 ■ ≥ 64 KT (≥118 KMPH)

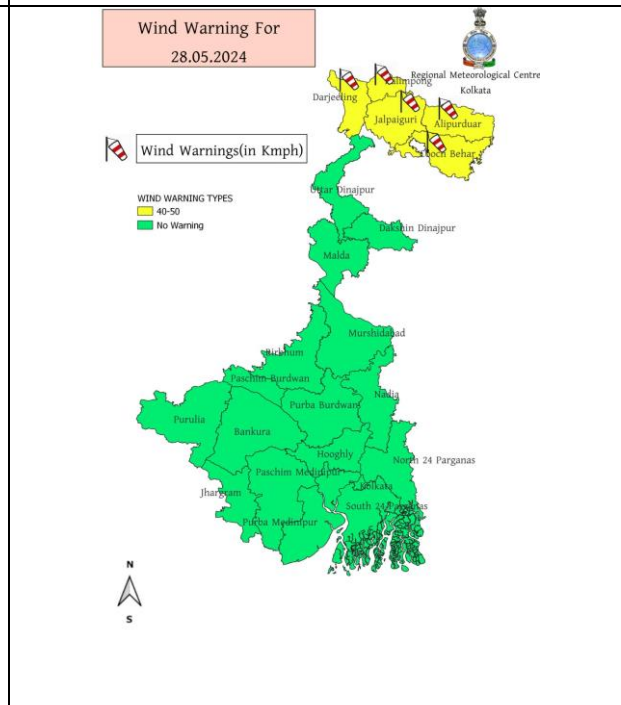
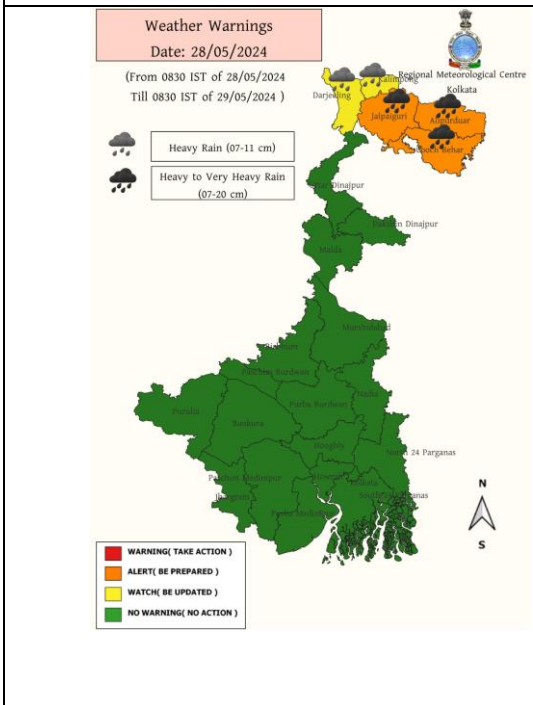
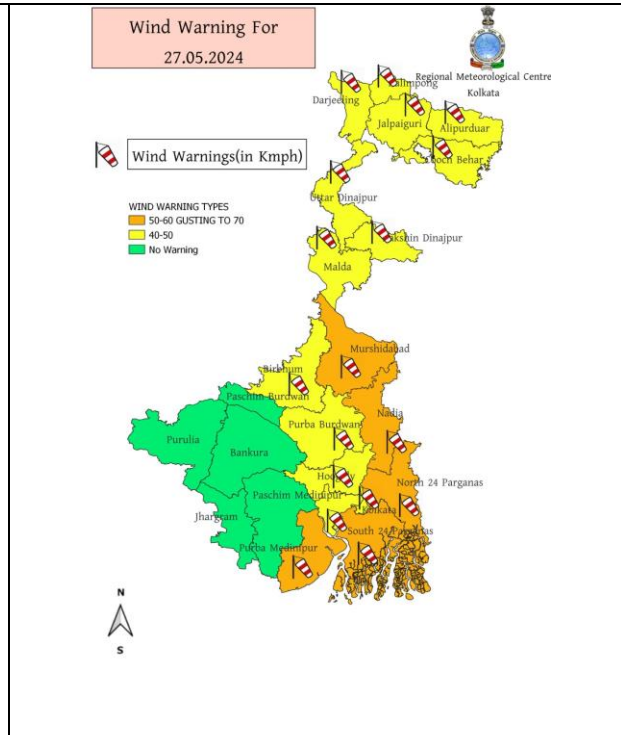
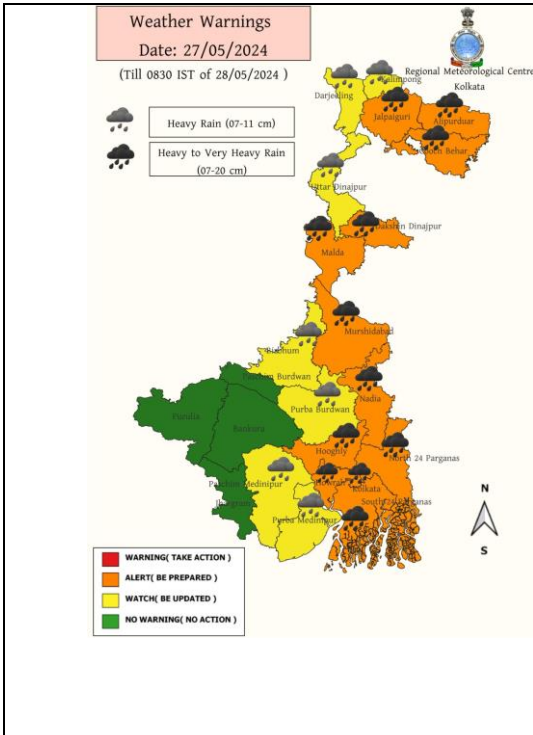
IMPACT OVER THE SEA

MSW (knot/kmph)	Impact	Action
28-33 (52-61)	Very rough seas	Total suspension of fishing operations
34-49 (62-91)	High to very high seas	Total suspension of fishing operations
50-63 (92-117)	Very high seas	Total suspension of fishing operations
≥ 64 (≥118)	Phenomenal	Total suspension of fishing operations

All India Warning Graphics



Warning Graphics of West Bengal

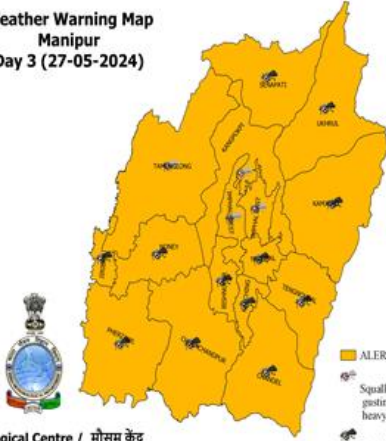


Warning Graphics of North-eastern States of India

MANIPUR

**Weather Warning Map
Manipur
Day 3 (27-05-2024)**

Issue Date:
25-05-2024



Warning

ALERT (BE PREPARED)

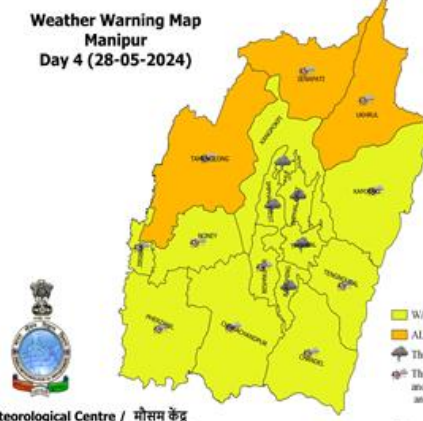
Squally wind with wind speed 40 to 50 kmph gusting to 60 kmph and heavy rain is very likely at isolated places

Squally wind with wind speed 40 to 50 kmph gusting to 60 kmph and very heavy rain is very likely at isolated places

Meteorological Centre / मौसम केंद्र
Imphal - 795140 / इम्फाल- 795140

**Weather Warning Map
Manipur
Day 4 (28-05-2024)**

Issue Date:
25-05-2024



Warning

WATCH (BE UPDATED)

ALERT (BE PREPARED)

Thunder

Thunderstorm with lightning and gusty with wind speed 50 to 60 kmph and heavy rain very likely at isolated places.

Squally wind with wind speed 40 to 50 kmph gusting to 60 kmph and heavy rain is very likely at isolated places

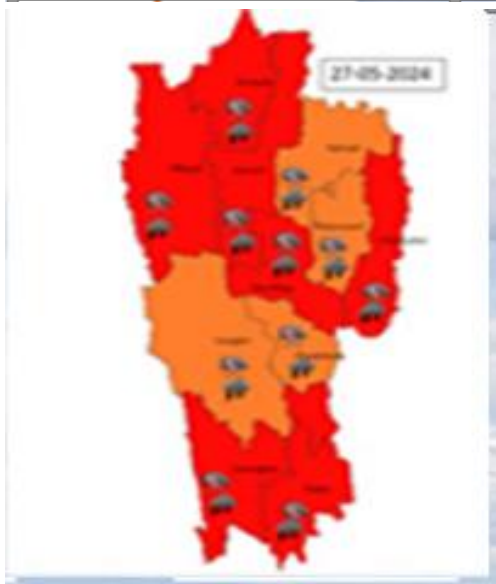
Meteorological Centre / मौसम केंद्र
Imphal - 795140 / इम्फाल- 795140

Issue Date:

MIZORAM

Day 1

Day 2



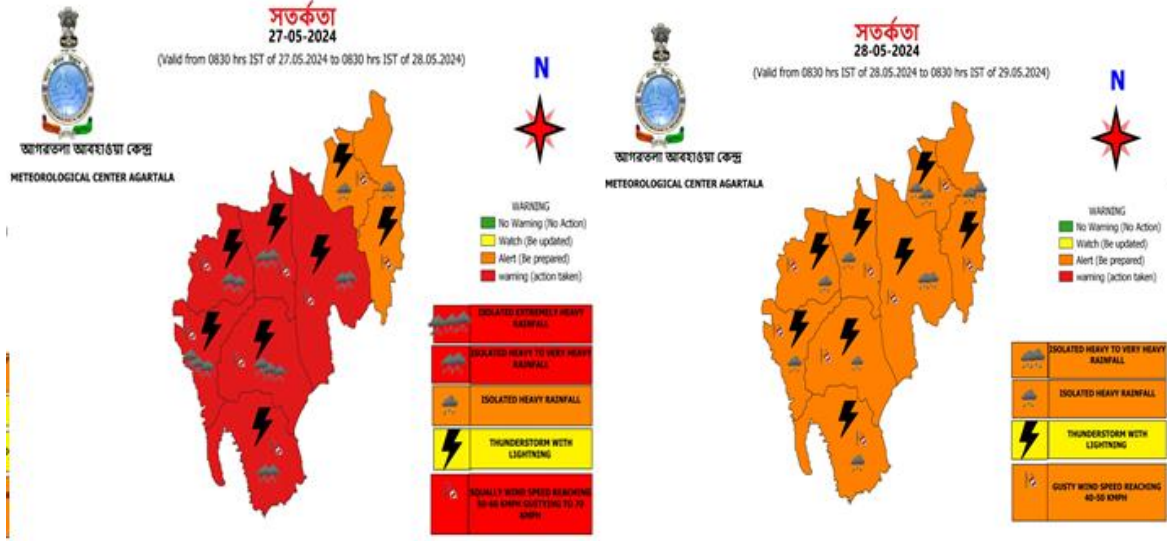
N

WARNING

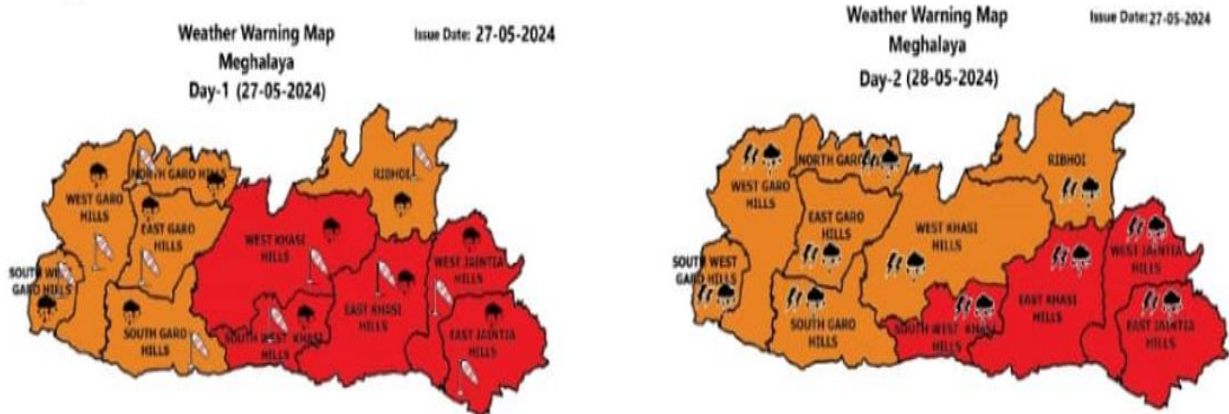
- No Warning (No Action)
- Watch (Be updated)
- Alert (Be prepared)
- Warning (Action taken)

	ISOLATED HEAVY TO VERY HEAVY RAINFALL
	ISOLATED HEAVY RAINFALL
	THUNDERSTORM WITH LIGHTNING
	GUSTY WIND SPEED REACHING 50 KM PH

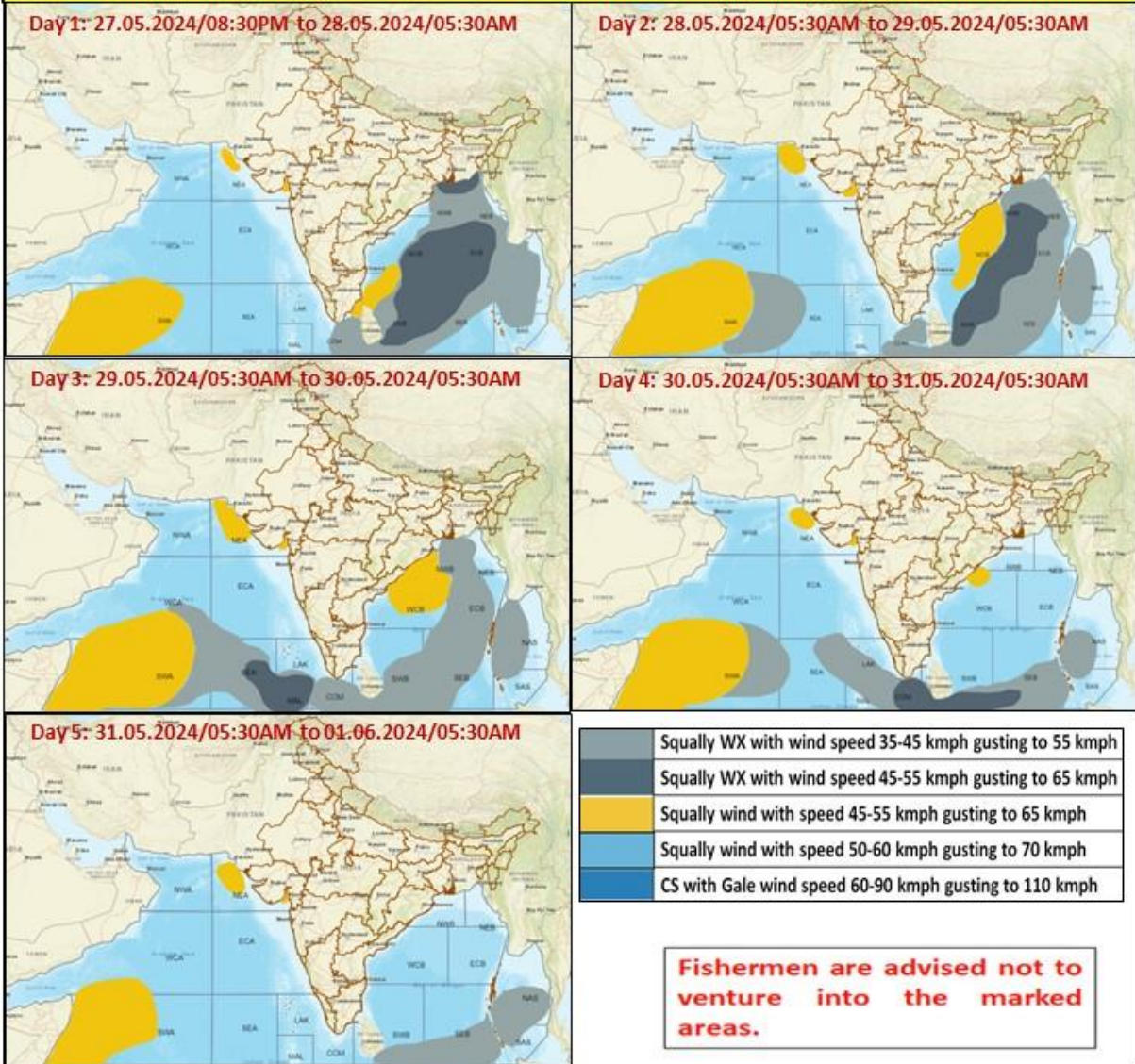
TRIPURA



MEGHALAYA



Fishermen Warning Graphics

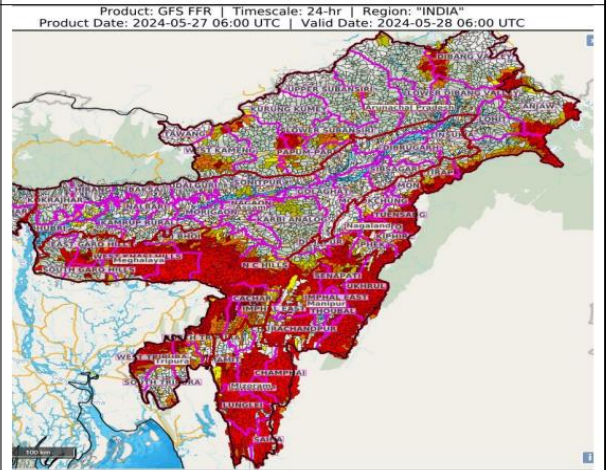


Flash Flood Guidance for Northeastern States

24 hours Outlook for the Flash Flood Risk (FFR) till 1130 IST of 28-05-2024 :

Moderate flash flood risk likely over few watersheds & neighbourhoods of **Arunachal Pradesh, Assam & Meghalaya** and NMMT Met Sub-divisions during next 24 hours.

Surface runoff/ Inundation may occur on low lying areas due to persistent rainfall under the influence of impending Cyclonic Storm "Remal" in next 24 hours.



Flash Flood Threat	Flash Flood Risk
 High Threat (Take Action)	 High Risk (Take Action)
 Moderate threat (Be Prepared)	 Moderate Risk (Be Prepared)
 Low Threat (Be Updated)	 Low Risk (Be Updated)